

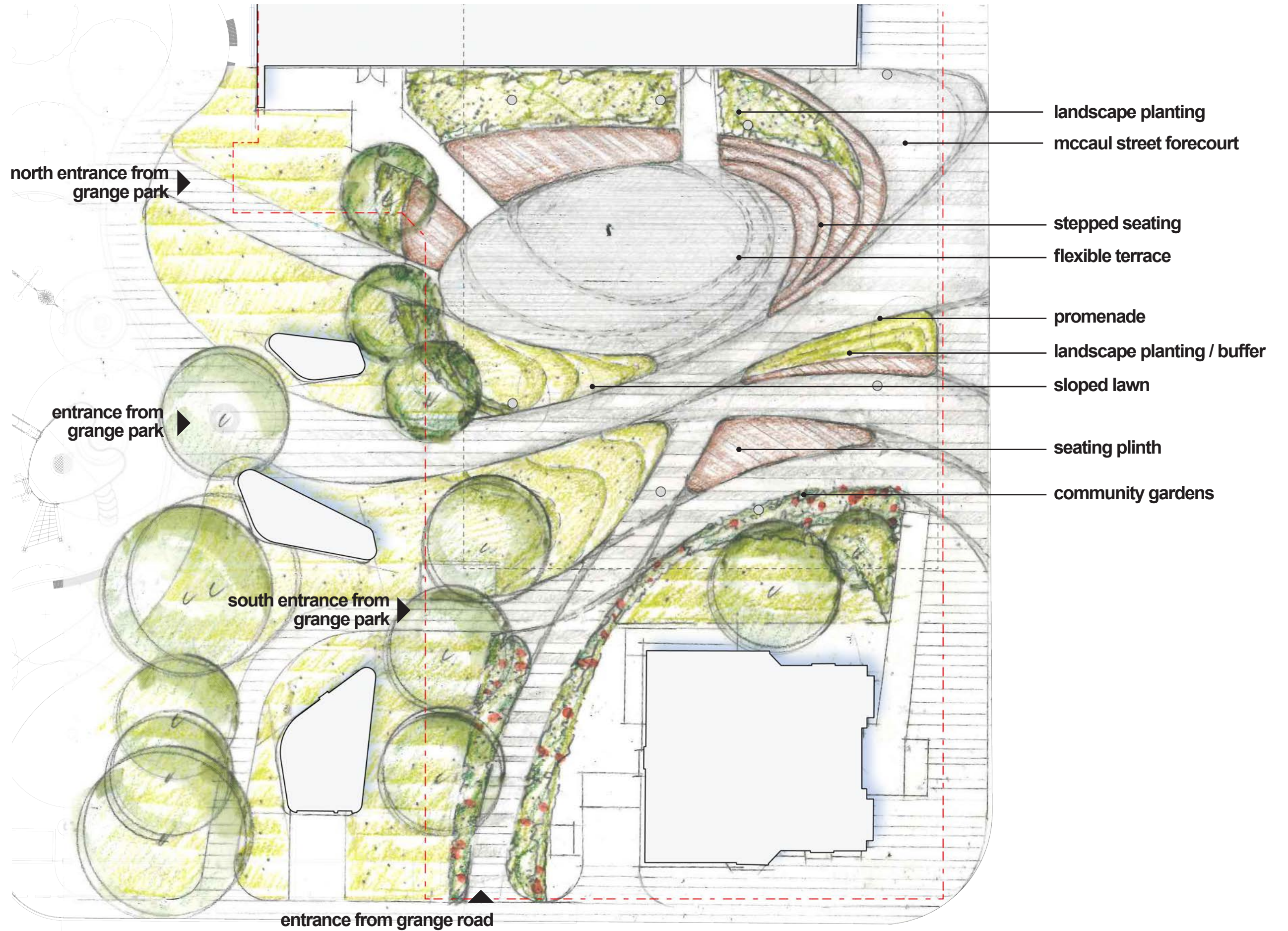
# butterfield park revitalization

schematic design | september 21, 2020

PFS STUDIO TWO ROW ARCHITECT



concept design presented on august 18, 2020



updated site plan

potential furniture/  
maintenance shed

reduced size of terrace

removed wood plinth

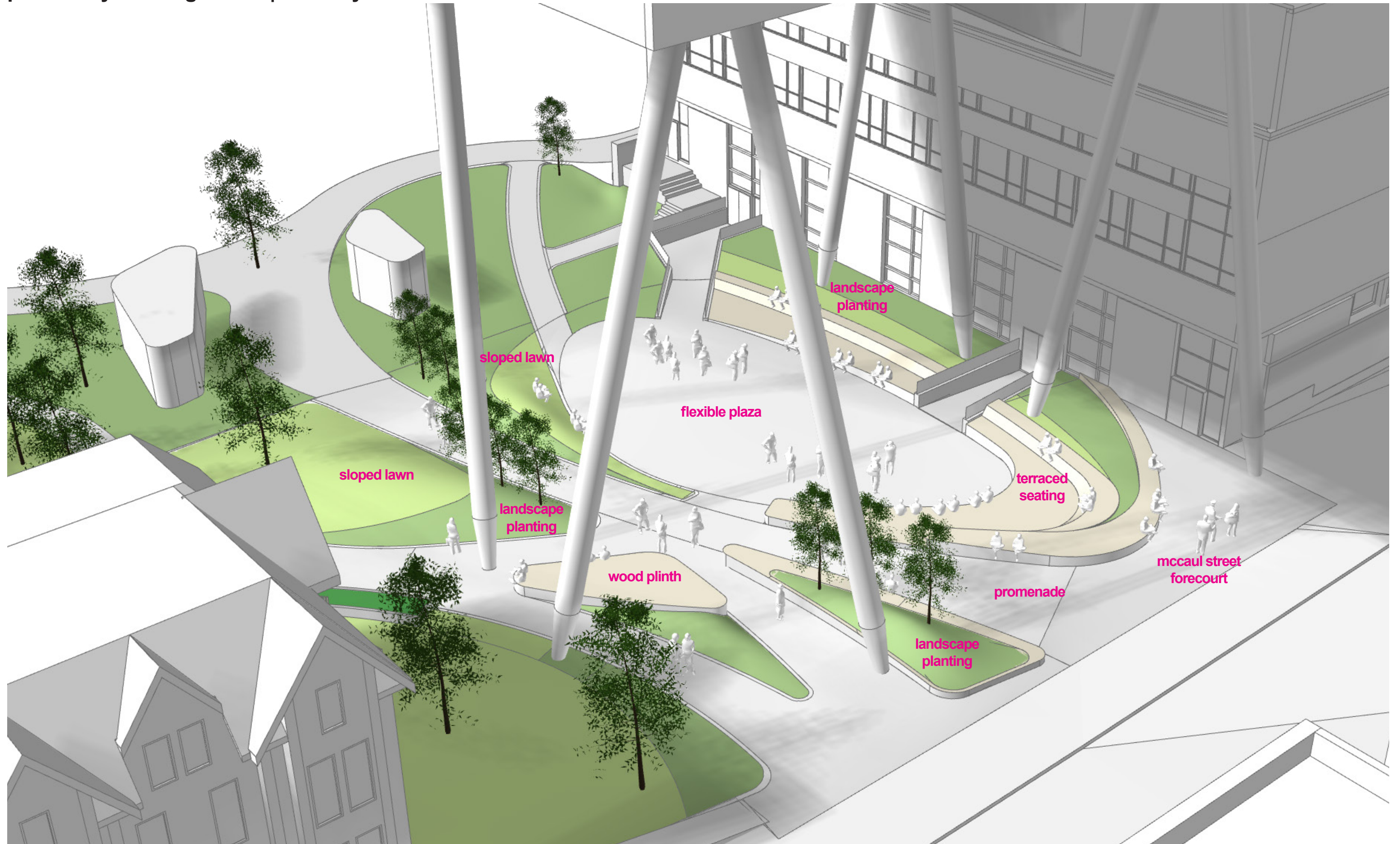


adjusted plaza opening

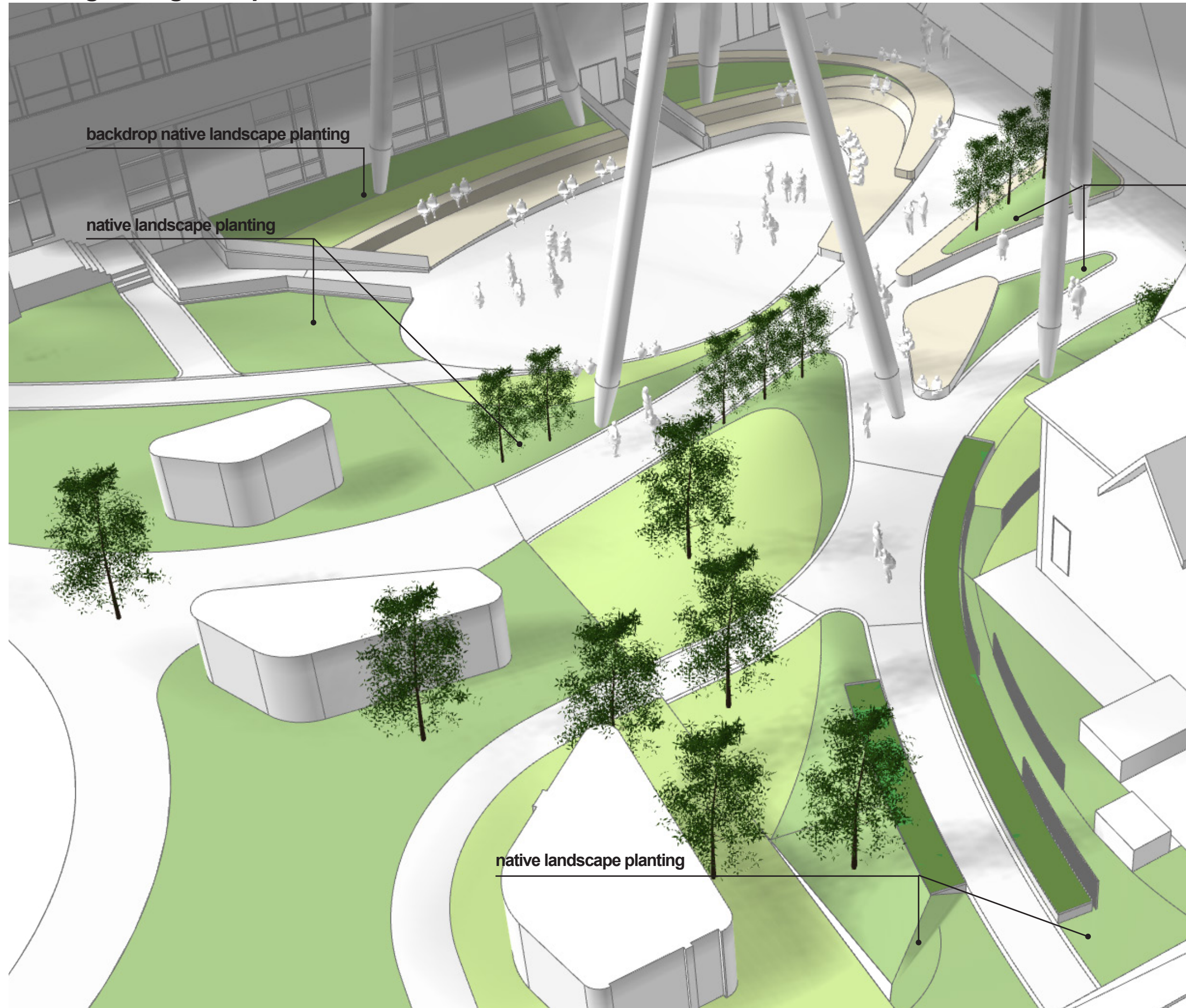
adjusted wood plinth,  
more landscape planting

added landscape planting

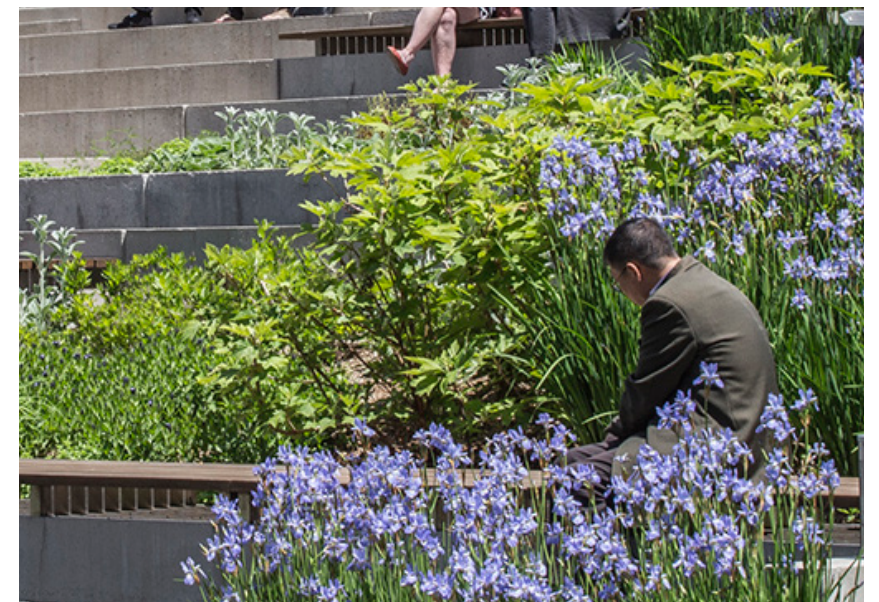
preliminary massing model | bird's eye view from mccauley south



**creating more green space**

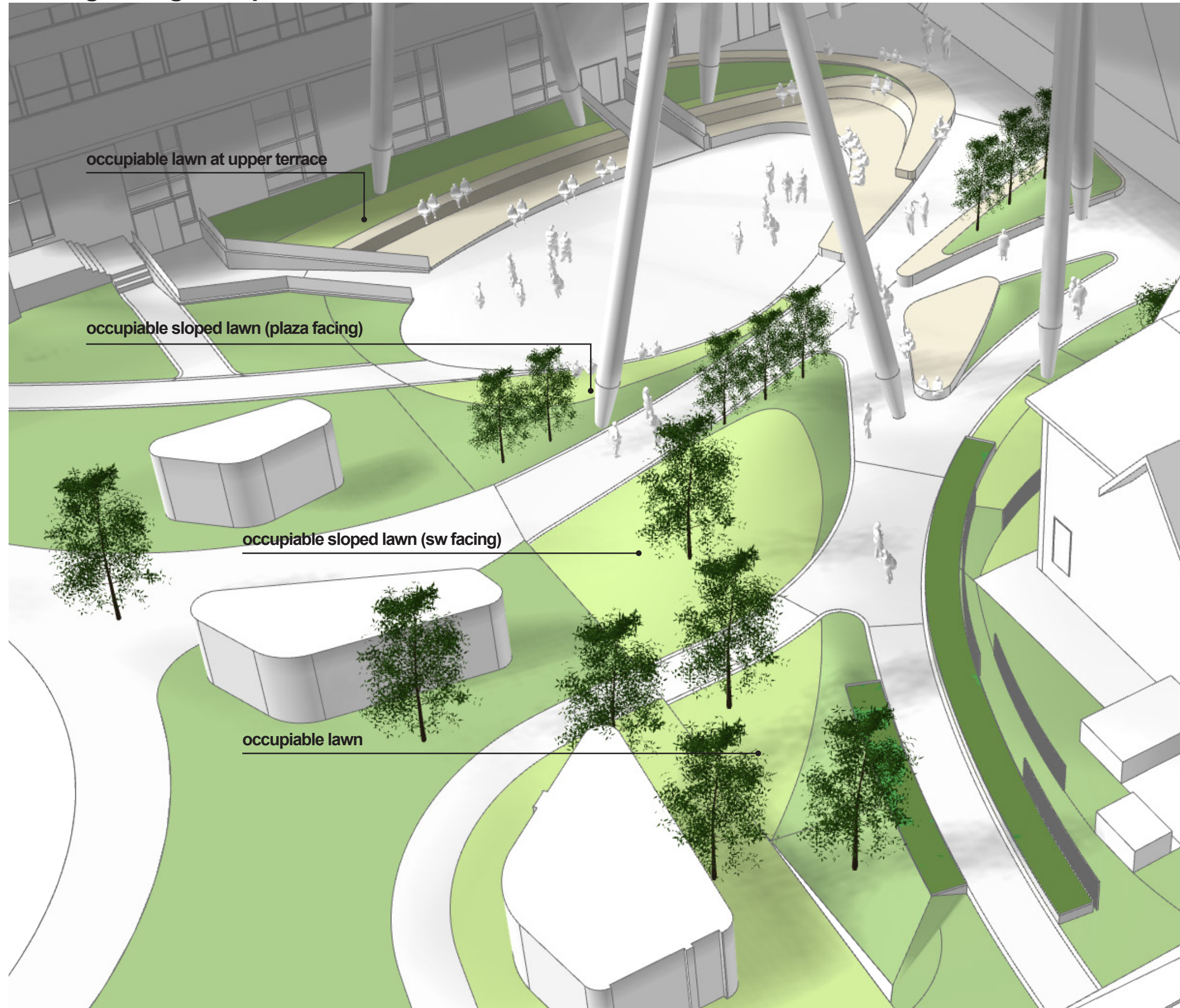


**native landscape planting**

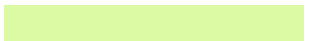


**native landscape planting**

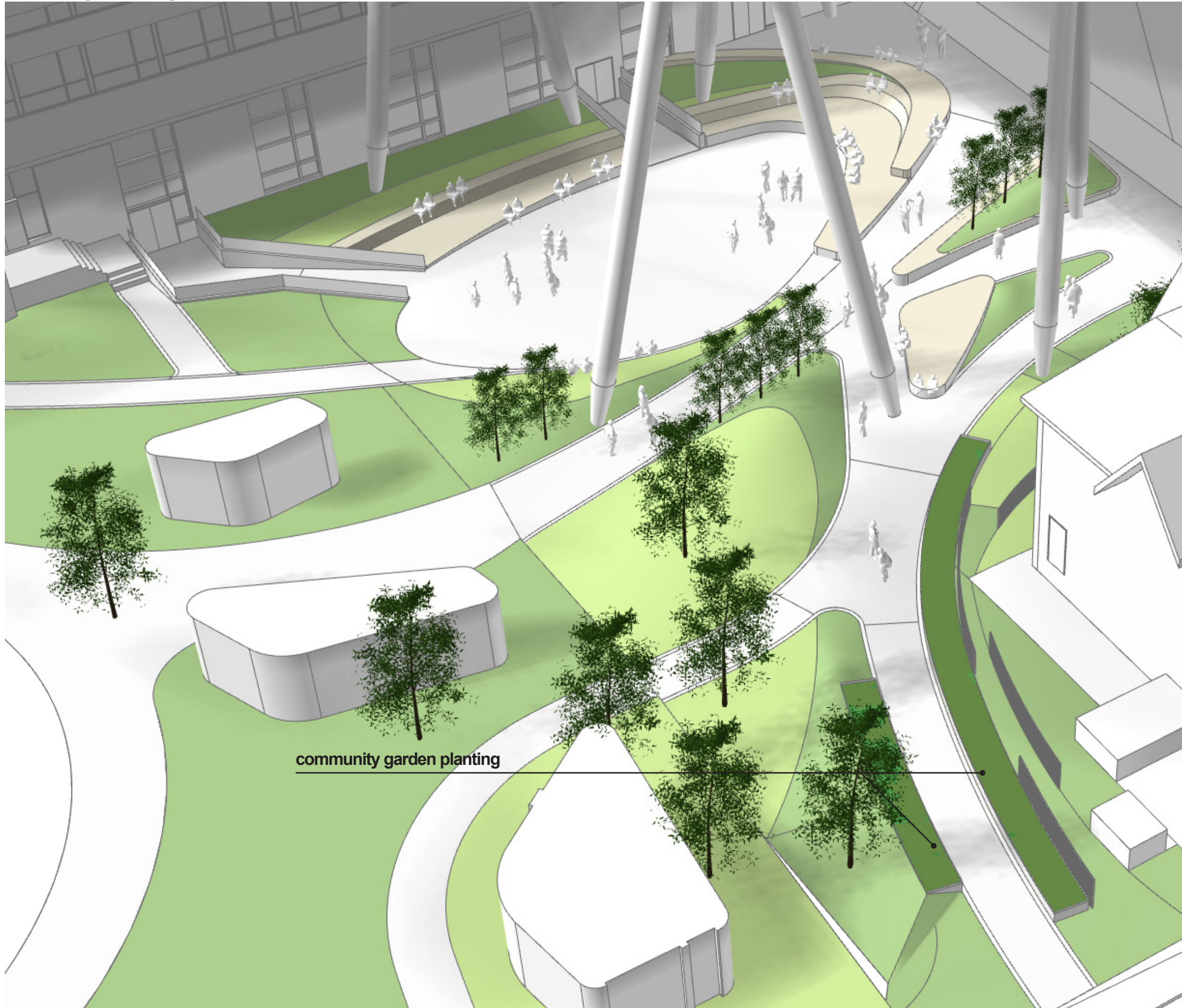
creating more green space



occupiable lawn (clover)



**creating more green space**

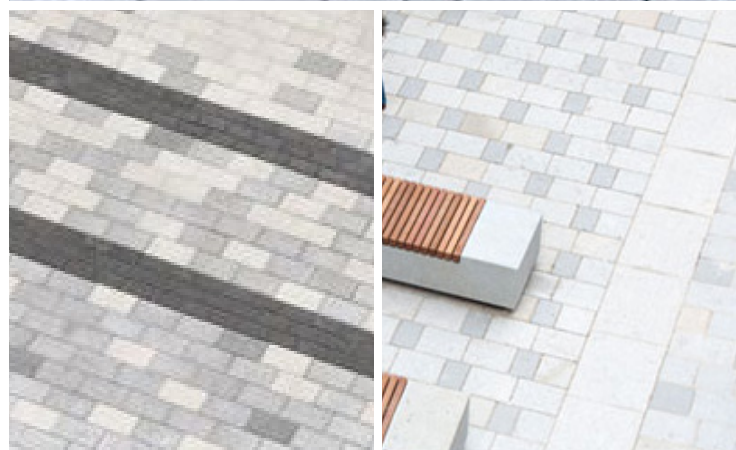


**community garden planting**

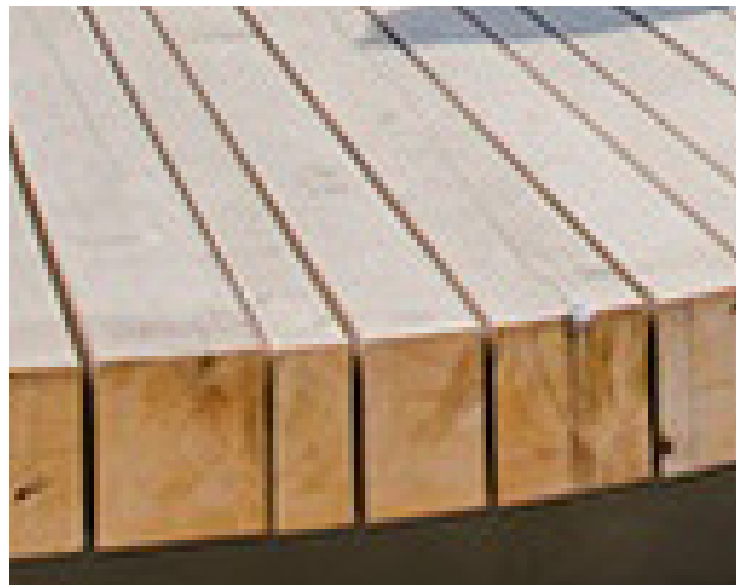


**integrated community garden planting**

**sustainable approaches to materiality**



**concrete unit paver (vehicular grade, permeable joints, blended light colour)**



**timber wood modules for seating (FSC sourced)**



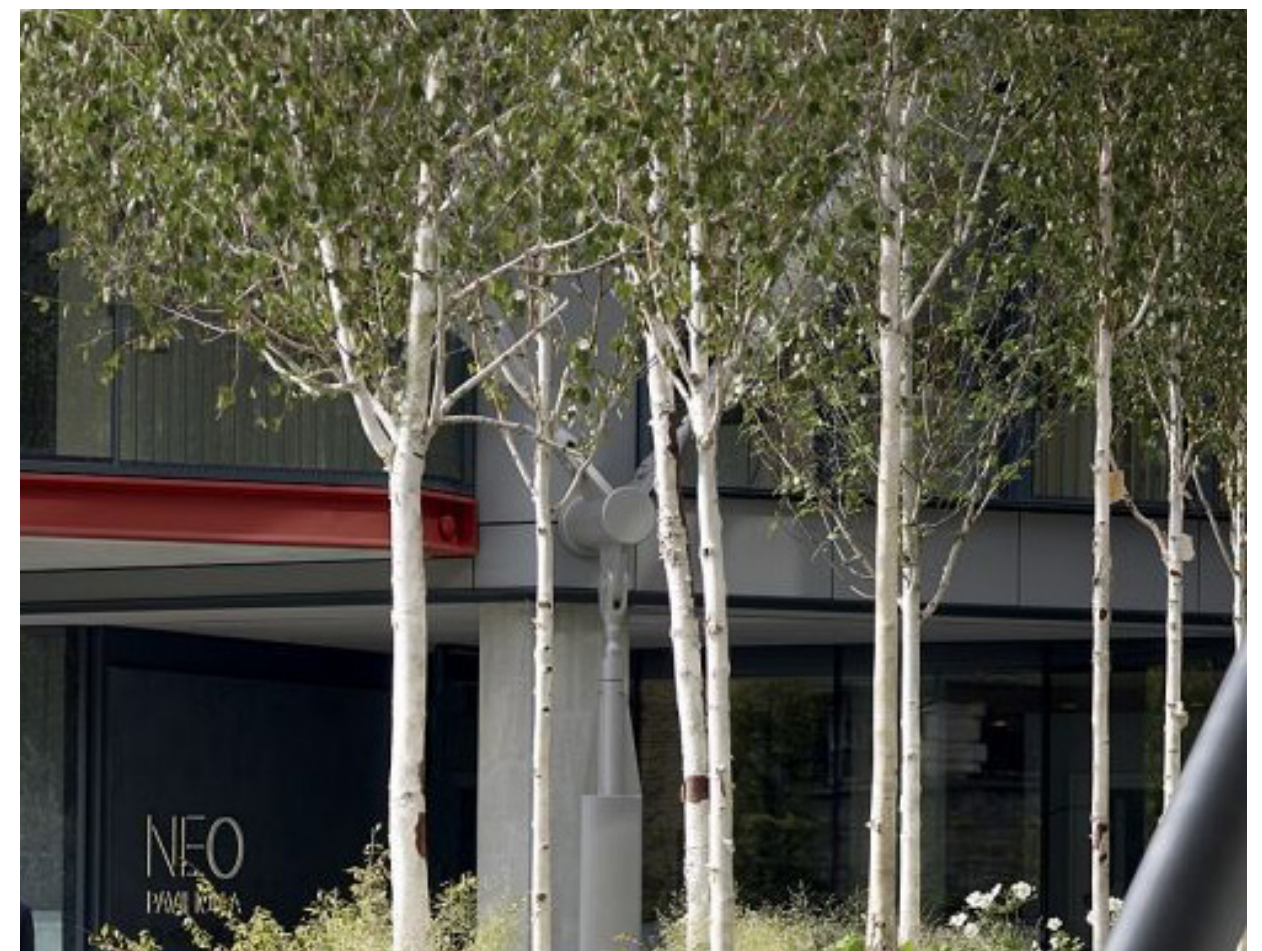
**vertical wood screening (FSC sourced)**



**clover lawn**



**capturing stormwater from pathways into planting zones**



**native landscape planting palette, pollinator species for biodiversity, indigeneity and drought tolerant species**



opportunities for winter interests



public art installation



warming hut installation



planting palette that supports winter interests



wood material for seating

furniture / maintenance shed location study



demonstrating Indigenous design principles



inclusivity



modern materials



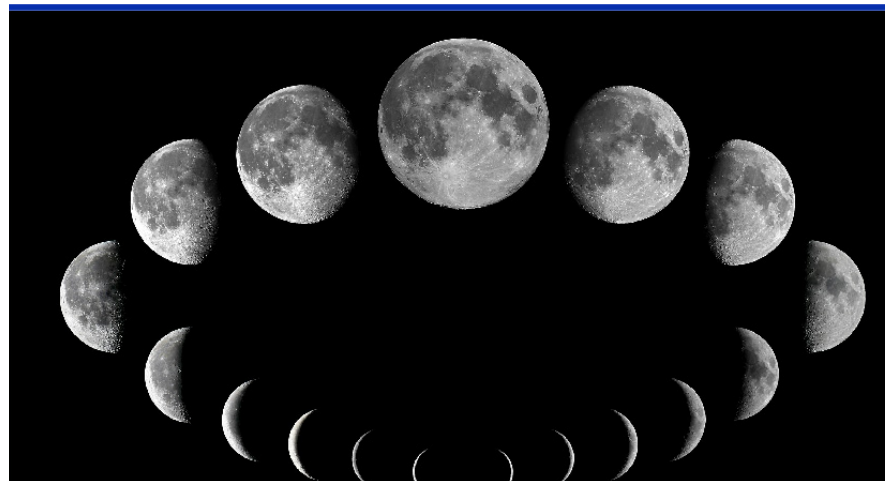
natural materials



ceremony



directionality



numerology



connection to nature



food and planting



craft



land acknowledgement

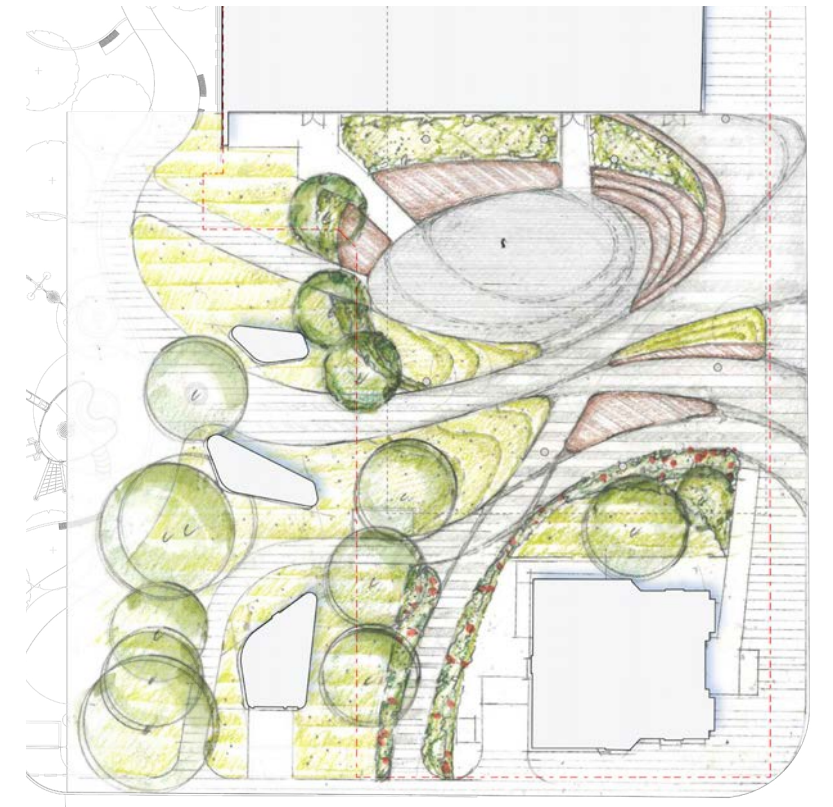
**indigenous design layers - clearing in a forest / meeting point**



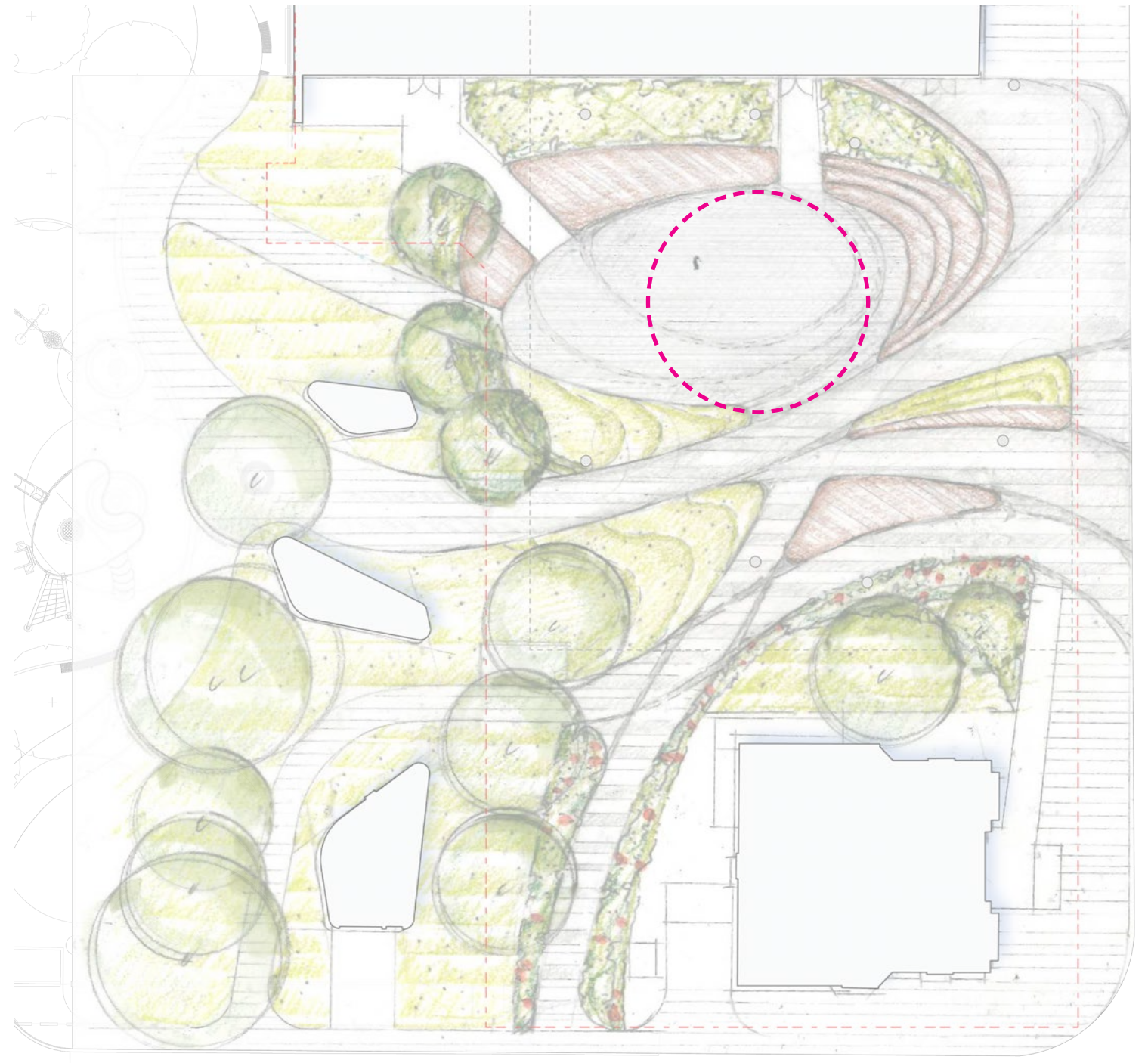
**butterfield park is a metaphor of a clearing at the edge of a forest - first nations meeting**



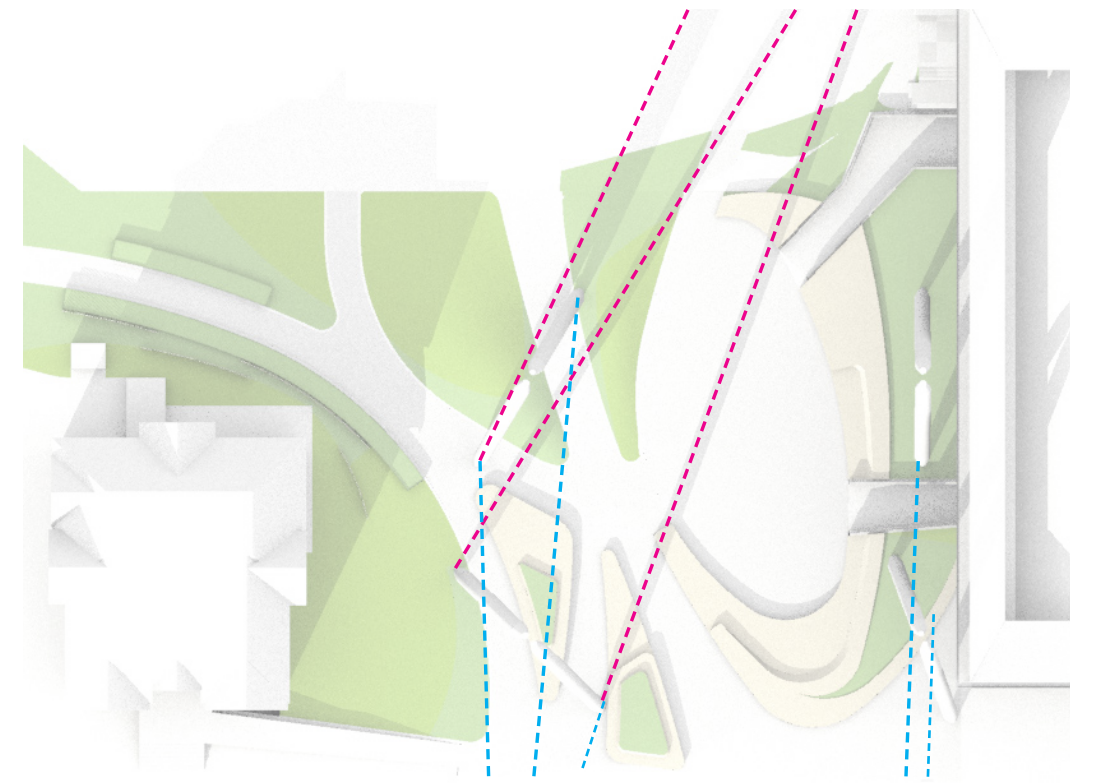
**spatially the open space plaza and amphitheatre is carved out of the forest to create a meeting point, gathering and ceremonial space**



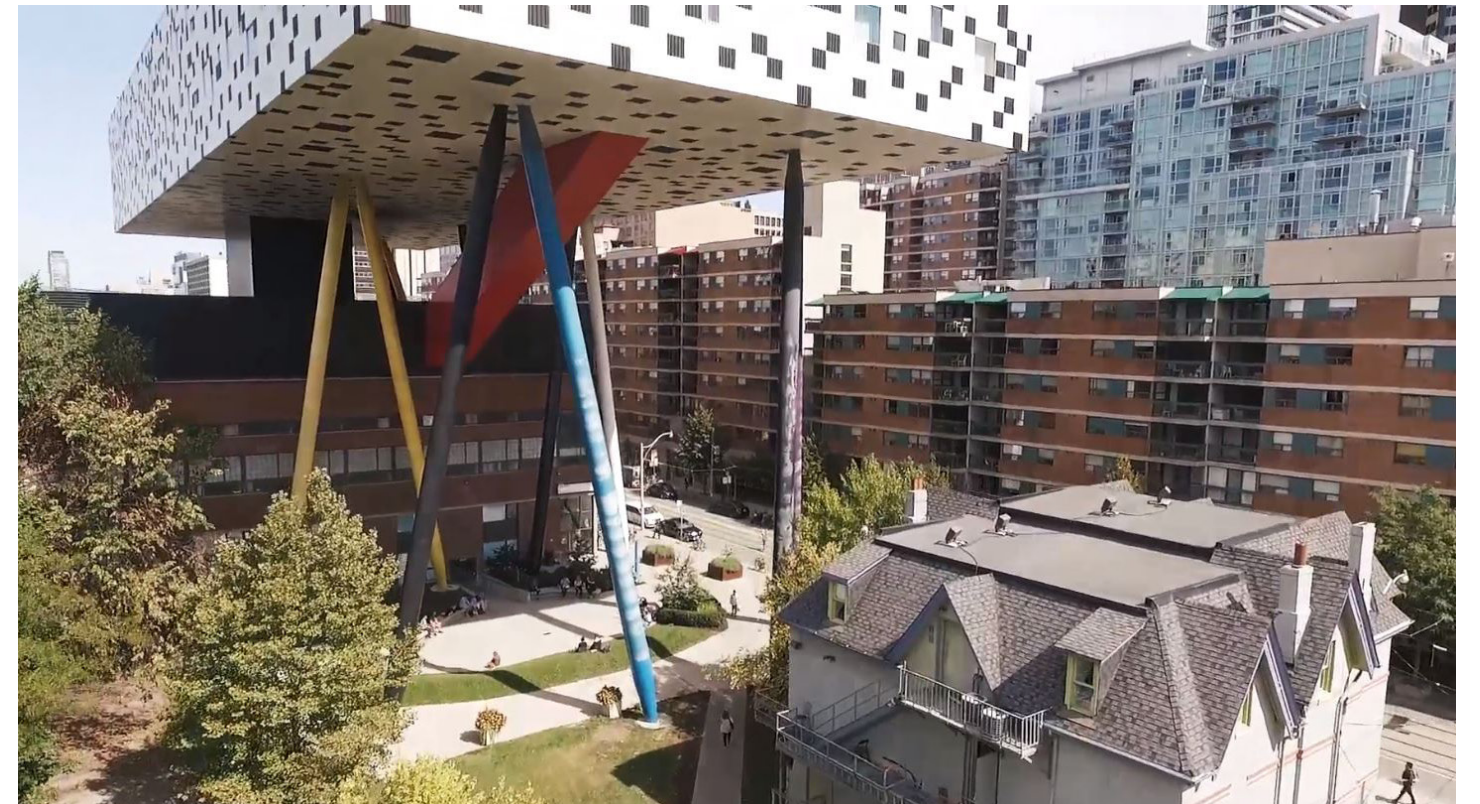
indigenous design layers - ceremonial, land acknowledgement and inclusivity



**indigenous design layers - directionality**

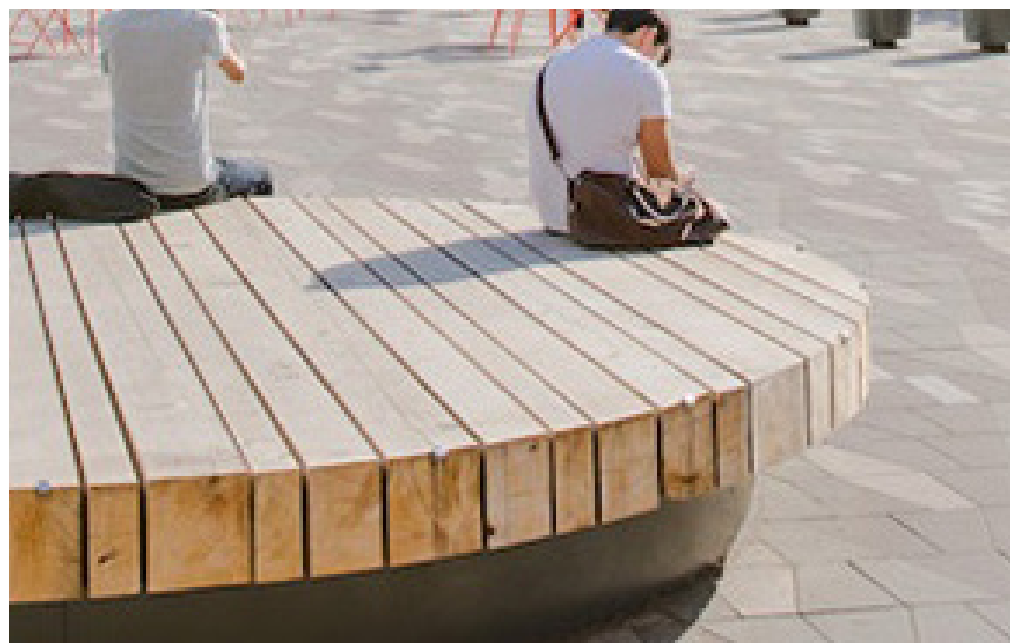


**demarcation of directionality of the sun during significant times in the calendar year**

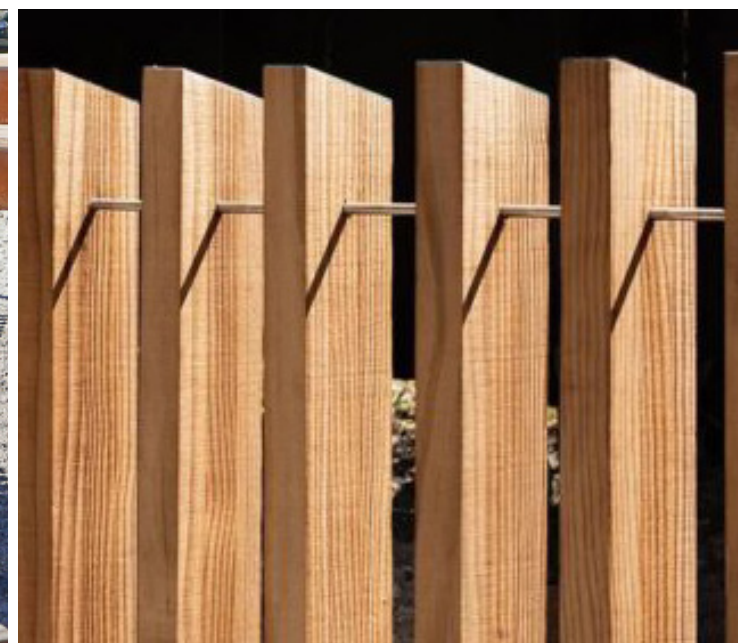


**projecting the shadow of architectural piles onto the ground plane**

indigenous design principals and layers - modern and natural materiality and craft



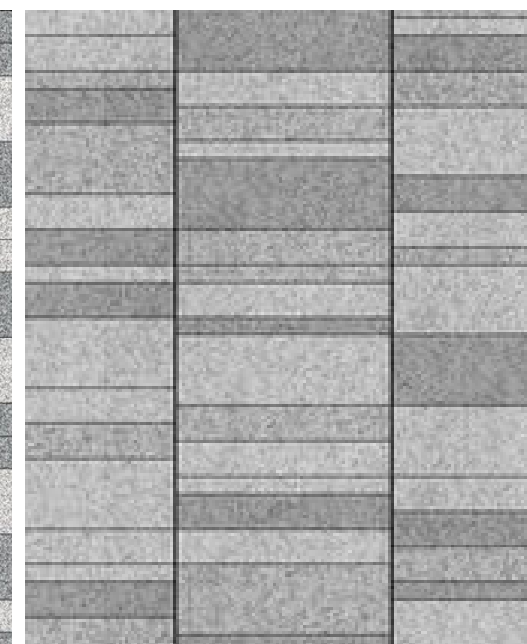
natural timber wood materials reflects a stand of fallen trees



vertical wood screening



abstracted paving pattern from the striations of the birch bark



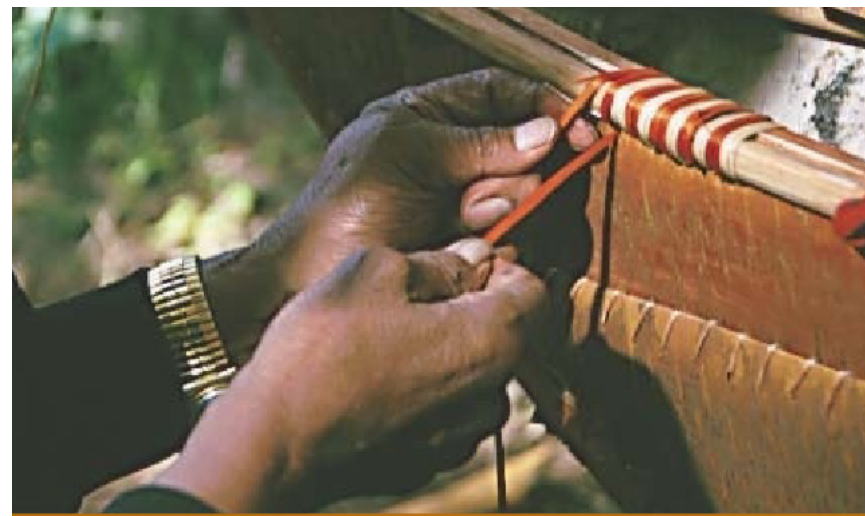
basket weaving pattern abstracted for paving



**indigenous design principals and layers - connection to nature / numerology / food and planting**



**Native and indigenous planting will provide an ephemeral backdrop to the park. Highlighted planting will explore the idea of the moon cycles.**



**Birch trees is a sacred tree among First Nations communities and a traditional material used for building canoes. Birch tree planting will create a seasonal and striking vertical element in the park.**



**herb and food planting will be integrated into the overall landscape planting strategy**